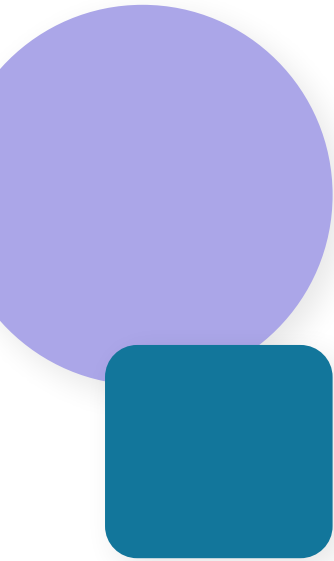


Taroko

— SCHOOL —



Next-Generation Education

Taroko School is committed to helping students become better prepared, more knowledgeable individuals for the ever-changing workplace. We offer enriched learning resources fueled by our love of learning and push education forward by providing opportunities not just in school but also outside it.

To help students reach their full potential, we focus on what they need from early childhood development through tertiary education. We do this by focusing on developing the core skills necessary for each stage of a student's journey - from early childhood into professional life after graduation.

We believe that:

- Children are individuals who learn at their own pace.
- Student only progresses when they are academically, socially, and emotionally ready.
- Independence is power. Students with the supervision of an educator, have a choice on what they are working on and when.
- Learning is improved when students help one another, which is why our classes are mixed age.
- Education is composed of academics, wellness, sports and culture. These aspects come together to create a basis for true understanding
- A student's learning journey should be defined by a multitude of learning opportunities and pathways — what we call our promise of “one school, multiple exits”.



'GOLDEN THREAD' EDUCATION: DEVELOPING A LIFELONG LEARNING AND GROWTH MINDSET IS ESSENTIAL.

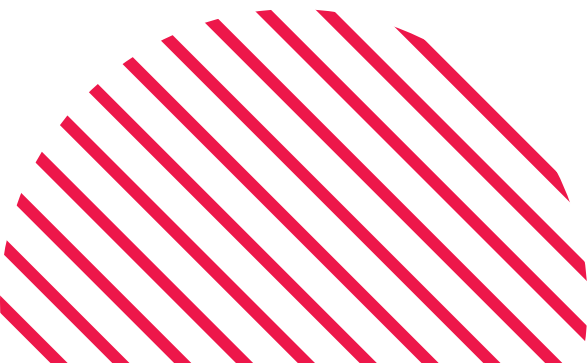
Our education system is there to nurture and empower you, igniting an informed curiosity and passion for lifelong learning.

This is our Golden Thread. A focus on self-regulated learning and the development of metacognition runs through every aspect of a student's academic journey. Students are encouraged to plan and monitor their progress as they learn new information. This philosophy leads them towards developing metacognition skills that can be used in all areas, academic or personal.

Metacognition is important to a student's educational success and can help children develop lifelong learning and growth mindsets. This will allow them to reach their true potential in all areas of life, not just academic pursuits.

WHAT?

The future of learning is now in the palm of your hands. Taroko School offers a multi-curricular educational ecosystem that empowers students by providing unparalleled academic choices and opportunities. An education that is holistic, internationally recognised, and provides greater exit opportunities.



Montessori

Montessori is where students' journeys begin with a philosophy of student-led education that believes every child has within them the person they will become.

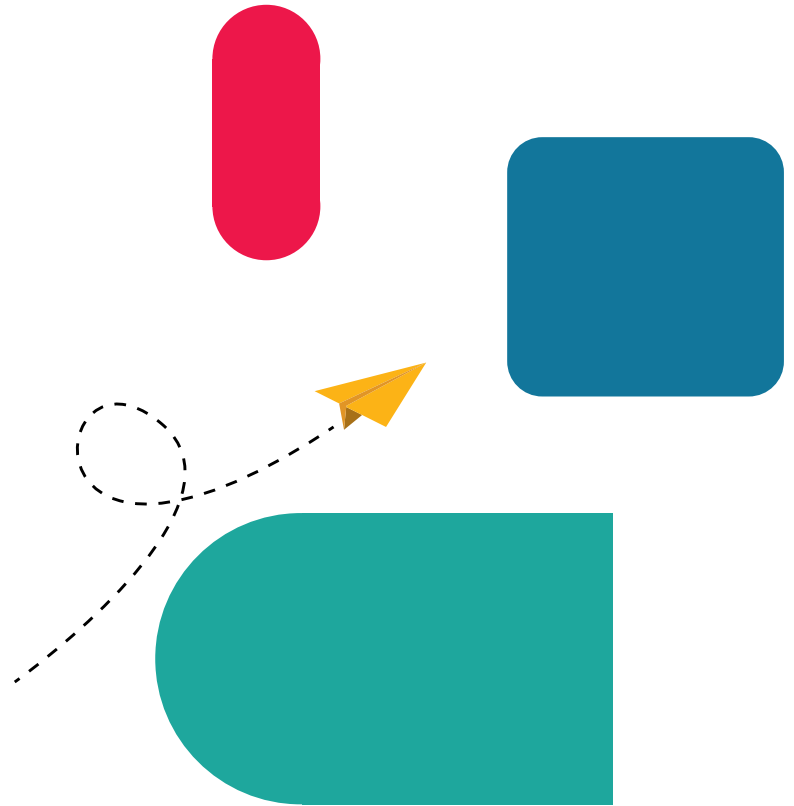
Montessori is a unique, student-centred method of education developed by Maria Montessori that emphasises independence, freedom within limits and respect for a child's natural psychological, physical and social development. The approach is based on self-directed learning, hands-on activities, and collaborative play, putting the student at the centre of the learning process. The Montessori classroom and the work cycle allow students to choose their activities and to work undisturbed. It is structured around key principles of:

- Prepared environment
- Absorbent mind (this is 3-6 related)
- Following the child
- Observation
- Independence
- Self-correction by the child

Our Montessori classes are mixed-aged and non-graded, with three-year groupings corresponding to the Planes of Development: 18 Months-3 Years, 3-6 Years, 6-9 Years, and 9-12 Years. Our Montessori classrooms use natural light, space and key work areas to help students direct their learning using specially designed didactic materials. These didactic materials help young students understand complex and abstract ideas by discovering hands-on objects. Learning is sensory using materials, geometric solids, sandpaper letters and coloured bead stairs.

“THE SENSES, BEING EXPLORERS OF THE WORLD, OPEN THE WAY TO KNOWLEDGE.”

- Maria Montessori



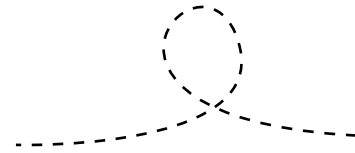
This allows young students to develop concentration and coordination while enhancing their social skills through peer interaction. Through practise and repetition, the students develop a foundational understanding of each material, can master the core skills and meet the required milestones within each learning area.

Practical Life

In addition to teaching specific skills, Practical Life activities promote independence and fine motor coordination. Students learn daily life skills inside and outside the classroom; they also develop appropriate social interactions such as gracefulness (being kind and behaving in a way that shows good manners) and manners (graceful responses in spoken or written words). These are all important for future success.

Sensorial

Through sensory learning, students can explore their world and learn about different objects. Sensorial learning helps students develop the ability to identify what they feel or see at an early age which helps them with numeracy, geometry and language skills later on.



Mathematics

Through hands-on activities, students learn to identify numerals and match them to their quantity, understand place-value and the base-10 system, and practise addition, subtraction, multiplication, and division. They also explore patterns in the numbering system. With an exploratory approach, children do more than just memorise mathematical facts; they gain a firm understanding of the meaning behind them.

Language

Activities throughout the Early Childhood classroom help students acquire vocabulary and develop the skills needed for later literacy and writing. The ability to read, a precursor to writing, is taught first. Using hands-on materials, students learn letter sounds, how to combine sounds to make words, how to build sentences and how to use a pencil. Once these skills are acquired, children spontaneously learn to read.

Cultural Studies

A wide range of subjects, including botany, zoology, history, geography, science, art and music, are integrated into lessons in the cultural area of the curriculum. Students learn about their community and the world around them. Discovering similarities and differences among people and places helps them develop an understanding and appreciation of the diversity of our world, with a profound sense of respect.

The Montessori Curriculum

The Early Childhood classroom offers five areas of study: Practical Life, Sensorial, Mathematics, Language and Cultural Studies.

Students learn critical and higher-order thinking skills through the world's largest international education programmes and qualifications providers, Cambridge International. This allows students to evolve their learning capacity, to extend and challenge what they can do by thinking outside the box.



Cambridge International



Cambridge International School

Our Cambridge International subject offerings and packages are carefully chosen and designed to meet general tertiary entry requirements and student interests. Students in this pathway typically take 7 IGCSE courses, with compulsory courses at this level being English First Language, Mathematics, and a second language (Afrikaans, Spanish, or French). After that, students have a choice of different subject packages that reflect a variety of sciences, commerce and creative subjects. After the completion of their IGCSE courses, students move on to complete 4 or 5 AS/A Level courses.

Students who complete IGCSE and AS Level examinations gain a matric equivalent certificate, joining the thousands more worldwide who are granted access and potential placement at leading national and international universities. This offers students and adults the best possible springboard into future opportunities.

The Cambridge Pathway

A clear path for educational success from age 9 to 18

Cambridge Primary

9 to 12 years old

Cambridge Lower Secondary

12 to 15 years old

Cambridge IGCSE and AS/A Level

15 to 18 years old



Taroko Schools acknowledge that, as humans, we need to view the child as a whole being, not in silos. We understand and celebrate that children are unique in their learning experience. Our focus is on equipping the child with academic knowledge and understanding the importance of emotional wellbeing in learning. We encourage empathy to assist children in learning by meeting their emotional needs.

Taroko schools have a holistic approach to education, emphasising the importance of emotional wellbeing. Our focus lies in equipping each student with academic knowledge while teaching the importance of taking care of their emotional wellness. We encourage empathy by helping meet students' emotional needs while preparing them academically through our unique educational programs.





Wellness at Taroko Schools

As a way to evolve the traditional role of 'school counsellor', we have introduced the role of the Wellness Coach. As the name implies, 'Wellness' denotes vitality, balance and well-being. 'Coach' implies that there are elements of skills that can be taught and practised.

Our Wellness Coach is a qualified counsellor or social worker with skills and specialisations in working with youth. They work alongside the educators to identify areas of teaching that individuals and classrooms might require and help equip the educators with these learnings to facilitate class lessons. Children are invited into a space to reflect and ask questions about relative emotional developmental areas with which they might need more support.

Our role is not to diagnose or use standardised assessment tools but rather to facilitate a safe space or to design a plan with the educators or external mental health professionals which best meets the needs of the child to create a balanced environment so that learning can take place.

The Power of Information Technology in Enhancing Lifelong Learning

As we enter the Fourth Industrial Revolution, it is clear that technology will majorly impact most aspects of our lives. We have carefully integrated the use of technology into our school, classrooms, and curriculums to help students acquire essential abilities that will help them thrive in this revolution.

School administration, communication, and education are seamless through our SIS (Student Information System). Educators can plan, collect data, report and offer feedback using tools to enhance classroom engagement.

In our 9-12 Phase classrooms, students are guided to use 'Tech Pods' to access technological devices as research tools and support for completing projects and tasks, developing the necessary skills and knowledge to use the internet and other digital technology effectively responsibly, and safely.

Technology is often used to support students' learning needs through word processors, reading pens or software when completing assessments and tasks. Technology is more closely integrated into our curriculum planning and assignments in our high school pathways. Students are guided and supported on their digital citizenship journey while we also provide them with ICT, digital literacy and CAT (Computer Application Technology) as subject offerings.

We understand that technology is a tool used in education, not an end. Technology's promise lies in how it is used to best support learning within our environments.



SÍ Institute

The future is now.

Where a student's decision leads to opportunity and future growth.

The SÍ pathway is our innovative tertiary-in-secondary stream that allows students to accelerate their journey by unlocking alternative learning approaches while still in High School, creating a variety of school exit credits. SÍ encompasses a set of International Access Qualifications (IAQs) that grants our students the opportunity to complete a matric equivalence NQF 4 certificate and progress to higher tertiary levelled qualifications while still within our high school environments.

An IAQ is a qualification that prepares and equips students with a good foundation for university-level study nationally and internationally. It provides access to various tertiary level qualifications, including Higher Certificates, Diplomas and Degrees.

SÍ IAQ programmes are fully accredited by the Awards for Training and Higher Education (ATHE). They are widely recognised across a vast majority of the UK and international universities as a pathway to studying for a degree. This broad level of acceptance and increased progression opportunity makes it an attractive offering for our students.

SÍ qualifications allow students to engage with more modular learning and micro-and nano-degree courses. Modular learning is where larger educational qualifications are broken into more manageable learning blocks tied to real career and life outcomes. Our courses, qualifications and modular learning blocks provide students with transferrable credits. By packaging these valuable credits, students can engage with stackable learning solutions as the credits essentially provide them with recognition of prior learning.



Sí uses a blended approach to education where students engage in both online and on-campus learning. Sí is also asynchronous, meaning students can start at any time of the year, allowing them to work through content at their own pace while gaining invaluable real-world experience.

Students start the Sí Pathway at a critical time — in the final years of High School, where decisions on futures have real-world consequences. Critically for Sí students, this path will unlock future opportunities much sooner than other students, better equipping them with the skills they will need.

[A Foundational Block becomes a Future Launchpad.](#)

In the final years of schooling, students begin a Foundational Block, which serves as a launchpad into their futures. This will be based on either Business or Wellness streams, both of which are fortified by our unique approach.

[Full Accreditation:](#)

These 12-month NQF level 4 accredited courses begin to unlock the academic credits which will contribute to full professional accreditation for students in the Sí Pathway.

[Themed Progress:](#)

Once complete, students choose which theme they would like to progress in BCom Entrepreneurship and Software Development, Bachelor of Management in Sport & Leisure or BEd Montessori. Once complete, all of these themes will result in a degree (NQF level 7) even as soon as 19 years old, which will better equip and fast-track Sí students for the working world.

Critically, through Sí, we have transformed an academic value into real-world practice, proving our commitment to experience-driven education. Vocational experience, where students can engage with thematic topics of the working world, such as sales, business and enterprise. In Sí, students can also retain Cambridge International subjects, better informing their greater study choices.

The key to creating our Sí pathway's unique blended learning approach was creating a tool that could make it possible. GenEx is that tool. It is a cloud-based learning universe that supports students and their educators on

their journey through multiple learning paths. GenEx is a single tool with two distinct halves delivering data and value.

[Student Information System \(SIS\)](#)

The SIS is the front office of GenEx. It is where all critical student data is stored, from curriculum building, lesson planning and resourcing to progression management and student portfolio view.

[Learner Management System \(LMS\)](#)

The LMS is the educational core of GenEx that enables one-on-one student development, subject management and course validation. This is achieved through intuitive learning design, asset libraries and resources, and full content integration with Microsoft Office 365 and the cloud.

[Growth experience with our Junior to Giant Programme.](#)

An initiative that enables students to conceptualise, design, create and contribute to real businesses while still in school, encouraging entrepreneurial spirit and growing critical workplace skills through structured internships.



GenEx

Generational Education Exchange

Sí to the power of GenEx

The key to creating our Sí pathway's unique blended learning approach was creating a tool that could make it possible. GenEx is that tool. It is a cloud-based learning universe that supports students, as well as their educators, on their journey through multiple learning paths.

GenEx is a single tool with two distinct halves that deliver both data and value.

SIS (Student Information System): The front office of GenEx. Where all critical student data is stored, from curriculum building, lesson planning and resourcing through to progression management and student portfolio view.

LMS (Learner Management System): The educational core of GenEx that enables one-on-one student development, subject management and course validation. This is achieved through intuitive learning design, asset libraries and resources, as well as full content, Microsoft Office 365 and cloud integration.

A gateway to a wider world of knowledge and future employability.

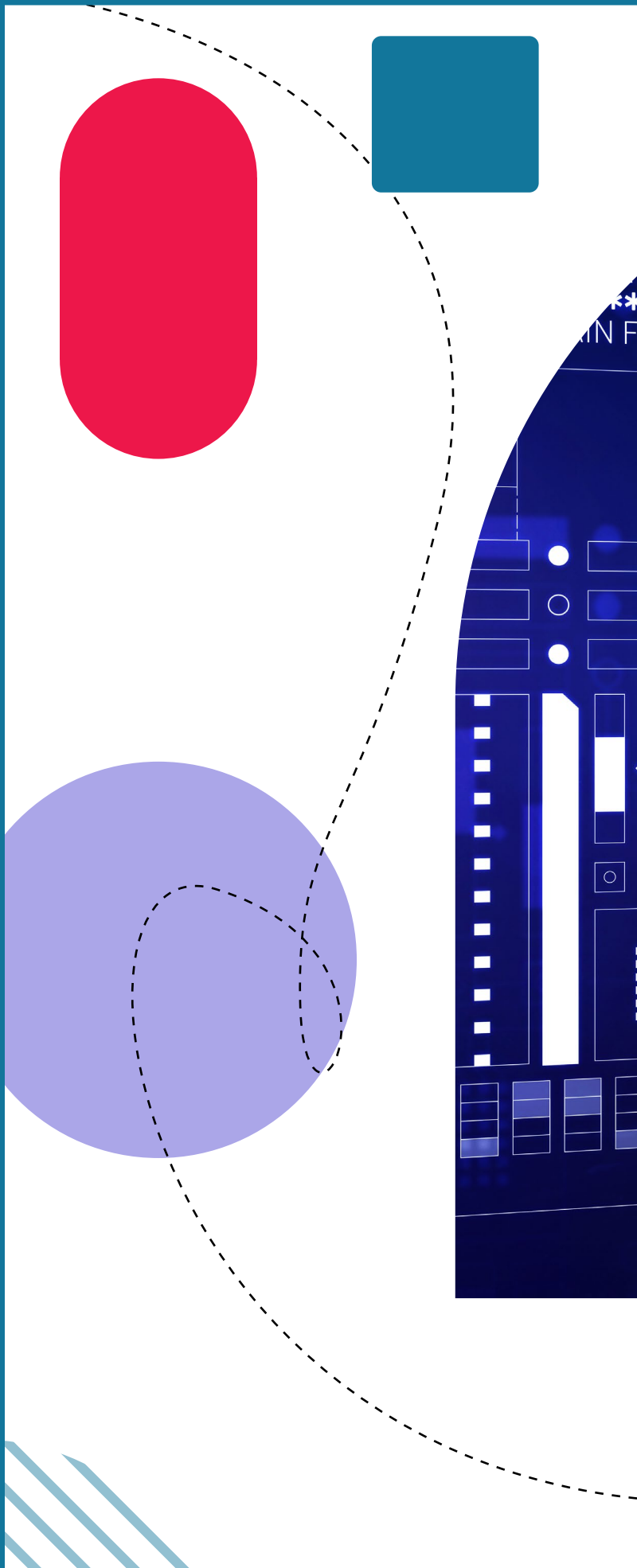


A New Generation

Next-Generation Education



Taroko
— SCHOOL —



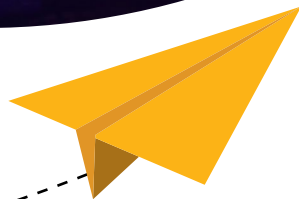
US

FILTER



***“EDUCATION IS SIMPLY
THE SOUL OF A SOCIETY
AS IT PASSES FROM ONE
GENERATION TO ANOTHER”***

- G.K. Chesterton



Taroko

— SCHOOL —



Cambridge International School



INSTITUTE
Conception. Profession. Ascension

 info@tarokoschool.co.za

 www.tarokoschool.co.za